

CALEDONIAN CANAL

skipper's guide

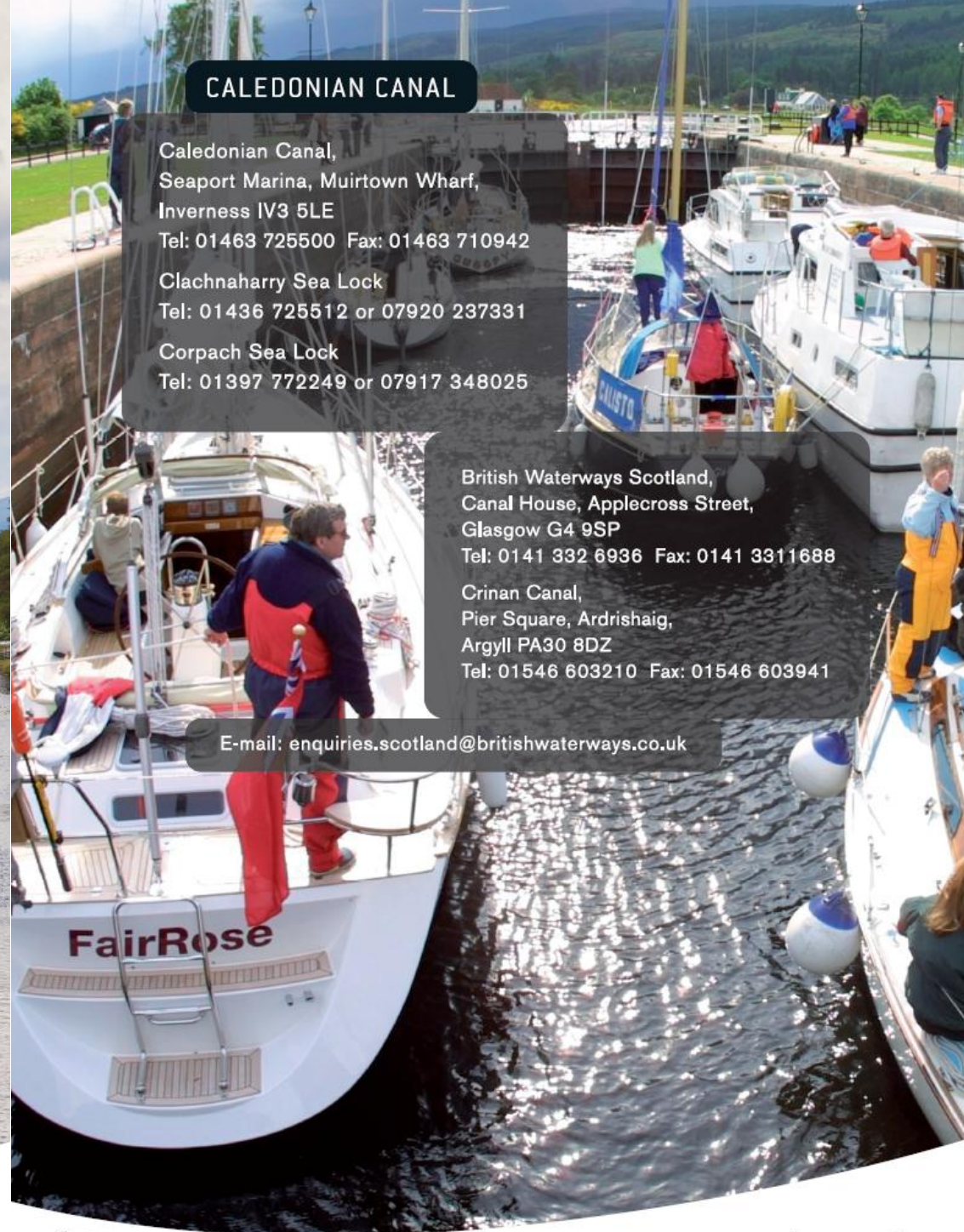


CALEDONIAN CANAL

Caledonian Canal,
Seaport Marina, Muirtown Wharf,
Inverness IV3 5LE
Tel: 01463 725500 Fax: 01463 710942
Clachnaharry Sea Lock
Tel: 01436 725512 or 07920 237331
Corpach Sea Lock
Tel: 01397 772249 or 07917 348025

British Waterways Scotland,
Canal House, Applecross Street,
Glasgow G4 9SP
Tel: 0141 332 6936 Fax: 0141 3311688
Crinan Canal,
Pier Square, Ardrishaig,
Argyll PA30 8DZ
Tel: 01546 603210 Fax: 01546 603941

E-mail: enquiries.scotland@britishwaterways.co.uk



WELCOME TO THE CANAL

British Waterways Scotland hope that you enjoy cruising the Caledonian Canal and trust that the information contained in this Skipper's Guide will prove helpful. If you have any queries or suggestions for improving our service please do not hesitate to contact the canal office, or visit www.scottishcanals.co.uk

MAXIMUM DIMENSIONS

45.72 m (150 ft) long; 10.67m (35 ft) beam; 4.11m (13.5ft) draft; Maximum mast height in the canal is 35m (115ft) above the waterline, but clearance under the Kessock Bridge on the Inverness Firth is lower at 27.4m (89.8ft).

The Caledonian Canal is approximately 96.5km in length (60 statute miles or 50 nautical miles) of which 35.4km (22 miles) is man made, the remainder being formed by natural fresh water lochs. There are 29 locks and 10 swing bridges along the waterway, all of which are operated for you by British Waterways' staff.

HOURS OF OPERATION

The canal operates on a seasonal basis as follows:

Winter: Monday to Friday	0900 – 1600
Spring & Autumn: Monday to Sunday	0830 – 1730
Summer: Monday to Sunday	0800 – 1800

Please note that locks and bridges may be closed during lunch break.

Lock and Bridge operations take some time to complete, so try to arrive at each location in time for the operation to be completed before closing time.

Call the canal office on 01463 725500 for details of winter closures for maintenance work.

MAIN ROAD BRIDGES

The main road bridges at Muirtown, Tomnahurich, Fort Augustus and Banavie are used daily by people driving to and from work. British Waterways assists traffic flow by allowing road vehicles priority at peak times.

RAIL BRIDGES

To assist the flow of rail traffic, the bridges at Clachnaharry and Banavie are periodically closed to canal traffic. See local lock keepers for timings.

TIDAL OPERATION

Special note should be taken of the tidal restrictions at sea locks. Within normal operating hours, Clachnaharry Lock is normally available 4 hours either side of high water. At low water and spring tides the sea locks are CLOSED 2 HOURS (or a little longer) either side of low tide.

Within normal operating hours, Corpach Sea Lock is available $\geq 1\text{m}$, and Clachnaharry Sea Lock is available $\geq 1.4\text{m}$. This restriction is caused by the need for sufficient depth to float the sea lock gates. Call the Sea Lock on VHF CH 74 for advice.

PASSAGE TIMES

The absolute minimum time required to make passage is 2 days, but why rush? Enjoy the delights of the Caledonian Canal.

CORPACH BASIN

Corpach Basin is at times used by large freight vessels which require room to manoeuvre, therefore it is rarely available for berthing leisure craft. Please follow the lock keeper's advice and berth where directed.

NAVIGATION

Information is contained in the following publications; Pilots: The Admiralty North Coast of Scotland Pilot (NP52) and the Admiralty West Coast of Scotland Pilot (NP66), both of which can be obtained from Admiralty chart agents.

Also in Yachtsman's Pilots published by Imray, Laurie, Norie & Wilson, and by Clyde Cruising Club.

Charts: Eastern Approaches: – Moray Firth 115, Inverness Firth 1078, Caledonian Canal 1791.

Western Approaches – Loch Linnhe (North) 2380, Fort William and Corpach 2372.

PILOTAGE

Pilotage is not normally required, however, in the case of very large craft this service may be arranged. Please contact the canal office for advice and allow a minimum of 48 hours for pilotage arrangements to be made.

NARROWBOATS

Skippers of narrowboats are requested to contact the canal office for specific safety advice in advance of arrival.

CUSTOMS CLEARANCE

A postal service can be arranged if you inform the Sea Lock Keeper on entry.

IMMIGRATION CLEARANCE

A telephone / fax service can be arranged if you inform the sea lock keeper on entry. All crew making first UK landfall **must** inform UK immigration.

SLIPWAYS

A slipway is located at Caley Marina, Canal Road, Inverness. Access and use should be arranged directly with Caley Marina, telephone 01463 236328.

A British Waterways slipway suitable for small shallow draft vessels is located at Seaport Marina. Customers wishing to use this service should contact the Canal Office to arrange access.

Small craft may also be launched on to Loch Ness from the beach at Dores, and from a shallow slipway at Inchnacardoch near Fort Augustus.

JETTIES & TRANSIT MOORINGS

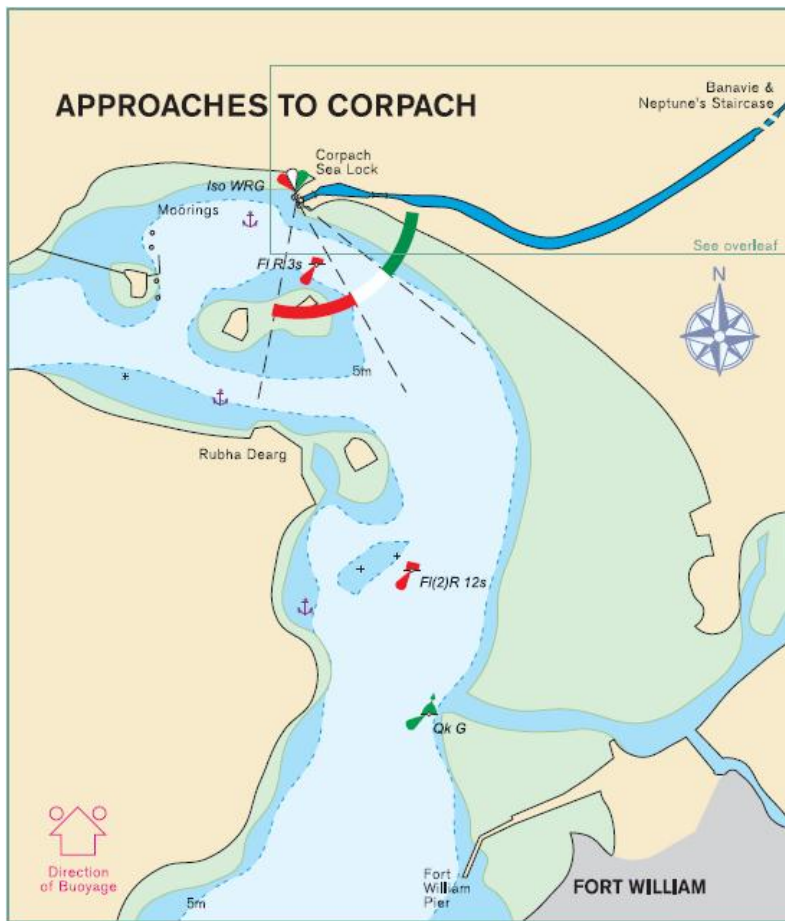
There are transit jetties adjacent to most locks and bridges. Please seek the advice of the lock keeper as to the best place to berth, particularly if you plan a long stay. During the summer season, it is helpful if skippers of large vessels (LOA $\geq 15\text{m}$) call the canal office prior to arrival, to allow planning of overnight berthing on passage.

FUEL

Diesel fuel is available at Seaport Marina, Caley Marina, and Corpach. Garages may also provide fuel in small quantities - enquire as to opening hours. Camping Gaz is available at many garages and local stores – please ask lock keepers for advice.

CANOEISTS

More than 2500 canoeists and kayakers paddle the canal each year. Please keep their launch pontoons clear and watch out for other water users.



APPROACHES TO CORPACH

- Admiralty Chart 2380 & 2372. Imray Chart C65.
- HW Corpach is at Oban ± 0000 (sp); -0020 (np). Tidal range 3.5m (sp); 1.3m (np).
- There is a holding pontoon outside the sealock.
- Yachts generally cannot lie in the sea lock basin, and should continue through the next set of locks or to Banavie.
- Marine diesel fuel is available at Corpach Basin.

CALEDONIAN CANAL INFORMATION

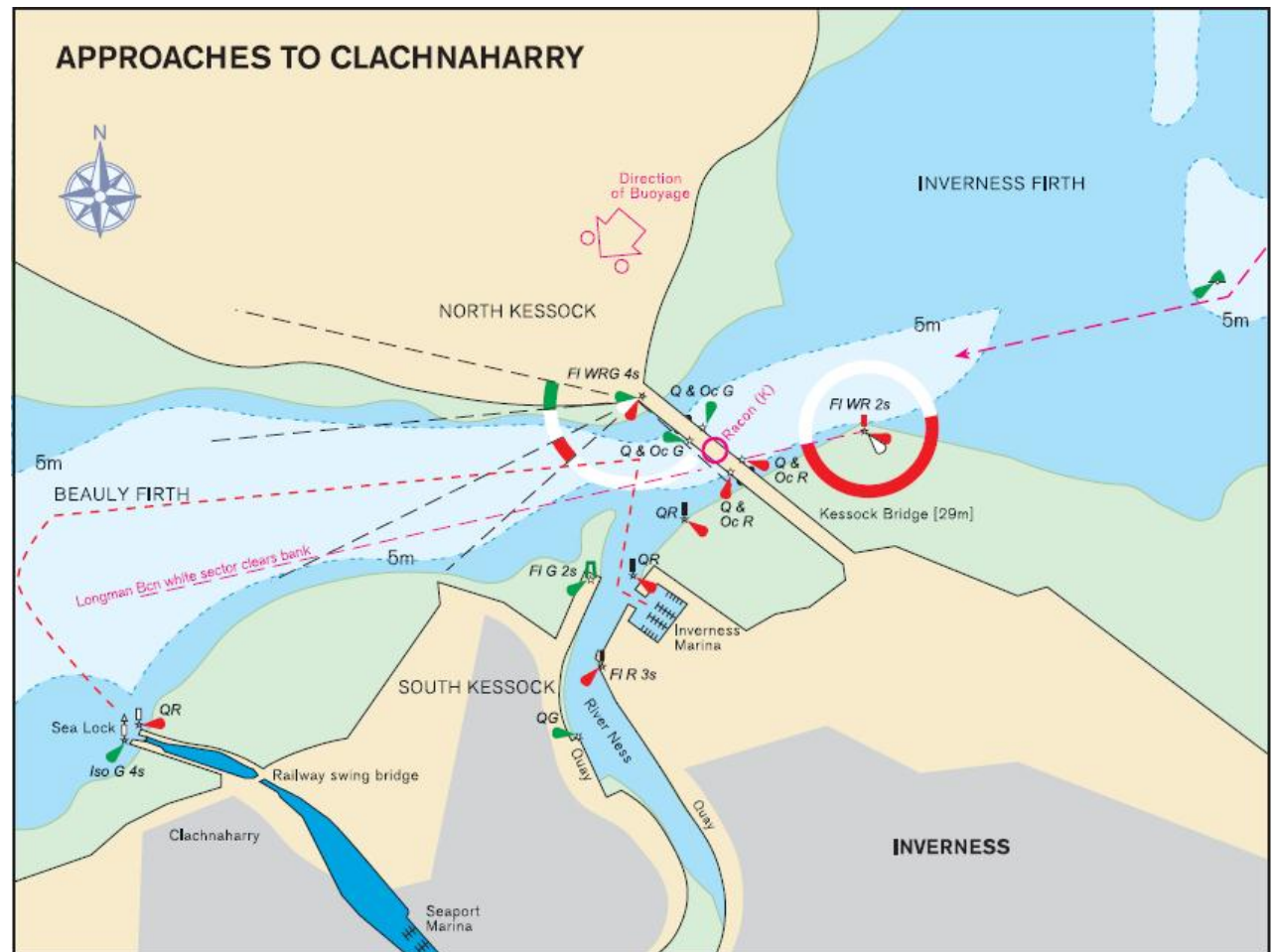
Length of natural lochs	38 miles (61.16Km)
Length of canal cuttings	22 miles (35.4 Km)
Total length of canal	60 miles (96.56 Km)
Summit level at Loch Oich:	106 feet (32.31m)
Number of Locks	29

SEA LOCK HOURS

- The Canal Sea- Locks operate $HW \pm 4$ hours, and within operating hours.
- VHF Ch 74 (16), call: "Corpach Sea Lock" or "Clachnaharry Sea Lock".
- Inverness Marina VHF Ch 12 / Inverness Harbour VHF Ch 12/16 (office hours)

APPROACHES TO CLACHNAHARRY

- Admiralty Chart 1078. Imray Charts C22 & C23.
- HW Inverness is at Aberdeen -0050 (sp); -0150 (np). Tidal range 4.1m (sp); 1.9m (np)
- The final 3 miles of the approach from the NE to Kessock Bridge is shoal in places. A careful course should be maintained.
- The tide runs strongly through Kessock Narrows and Kessock Roads. Approach the sea lock with care in these conditions.
- Anchoring off the sea lock may be difficult due to strong tidal current. It may be preferable to wait in Inverness Marina.
- To avoid sandbank NE of canal entrance, (night) keep in white sector of Longman Point Beacon, or (day) keep beacon well open north of S bridge pier.
- For passage between Inverness Marina and Clachnaharry Sea Lock (and vice versa) see map below.



SOME PRIMARY SAFETY POINTS

DO

- 1 **Do have an adequate number of competent crew aboard. Single-handed passage is only possible when sufficient staff are available to assist with ropes**
- 2 Do take time to plan ahead, lay out warps, fenders, and clear decks before you set off.
- 3 Do check fuel and oil levels before starting the engine and also that all controls are working properly.
- 4 Do make sure that children and non-swimmers wear life jackets.
- 5 Do try and keep the canal tidy – dispose of litter in a thoughtful manner.
- 6 Do relax and take your time.

DON'T

- 1 Do not speed in the waterway, this damages banks and affects other waterway users.
- 2 Do not allow pets to wander – keep them on leads and do not allow them to foul the canal banks.
- 3 Do not cruise after darkness.
- 4 Do not cruise near weirs, or attempt to shoot them in canoes.

EMERGENCY Out of Hours Contact: Freephone Canals 0800 47 999 47

SAFETY FIRST and the CANAL ENVIRONMENT

BOAT SAFETY SCHEME

All users of the canal must show us evidence that they hold insurance for a minimum of £1 million third party liability. Boat Owners using the canal for more than 28 consecutive days must get a Boat Safety Certificate. Boats using the canal for less than 28 consecutive days may need to pass a (free) Dangerous Boat spot check carried out by a person authorised by British Waterways. The boat will be checked to see there is no: • leaking fuel • leaking gas • damage to electrical cables • no imminent danger of capsize or sinking.

We will require a Boat Safety Certificate to be produced for further licences.

SPEED LIMITS

The maximum speed permitted on the canal sections is 5 knots, but please plan your passage with leisure in mind since excess speed not only damages canal banks, but is hazardous to other users. Please slow down as you approach locks and bridges, and also whilst passing moored craft.

VHF COMMUNICATION

Sea locks and most locks and bridges are equipped with VHF and operate on Channel 74. Please keep your VHF Radio switched on!

RADAR

Masters are requested to ensure radar scanners are switched off whilst craft are within or approaching locks.

WIFI

BT Openzone hotspots are available at 7 locations along the canal (see chart overleaf). Vouchers are available to purchase online at www.btopenzone.com

LARGE VESSELS WARNING

Large commercial vessels operate on the Caledonian Canal. These craft normally have right of way and it may be necessary to stop smaller craft for short periods. For your safety please adhere to British Waterways' staff instructions at all times.

SWIMMING

Please do not swim in the waterway, you could become entangled in weeds or rubbish, be hit by a passing craft or be drawn into a sluice when someone uses a lock. In each case the results could be fatal.

DRINKING WATER

Taps are available at Seaport Marina, Dochgarroch, Fort Augustus, Laggan, Gairloch, Banavie and Corpach. Please bring your own hose for connection to the taps.

TOILETS AND SHOWERS

These are available at locations throughout the canal. Please see the maps overleaf. Keys are issued by sea lock keepers on arrival and collected on exiting the canal.

There is a fee for keys not returned on exit.

PUMP OUT FACILITIES

Available at Banavie, Fort Augustus and Muirtown locks. If you require a pump-out please ask lock staff for advice on operation and service cost. Please note that black water cannot be discharged into the canal.

LITTER

Please respect the sensitive environment along the canal by using the refuse disposal points provided at locks, or retain litter until you can recycle it. Some locations have compulsory recycling facilities.

LAUNDRY FACILITIES

These are available at Seaport Marina and Fort Augustus, Gairloch and Banavie – please see local notices for advice on costs and operation. Be sure to bring your own washing powder or liquid detergent!

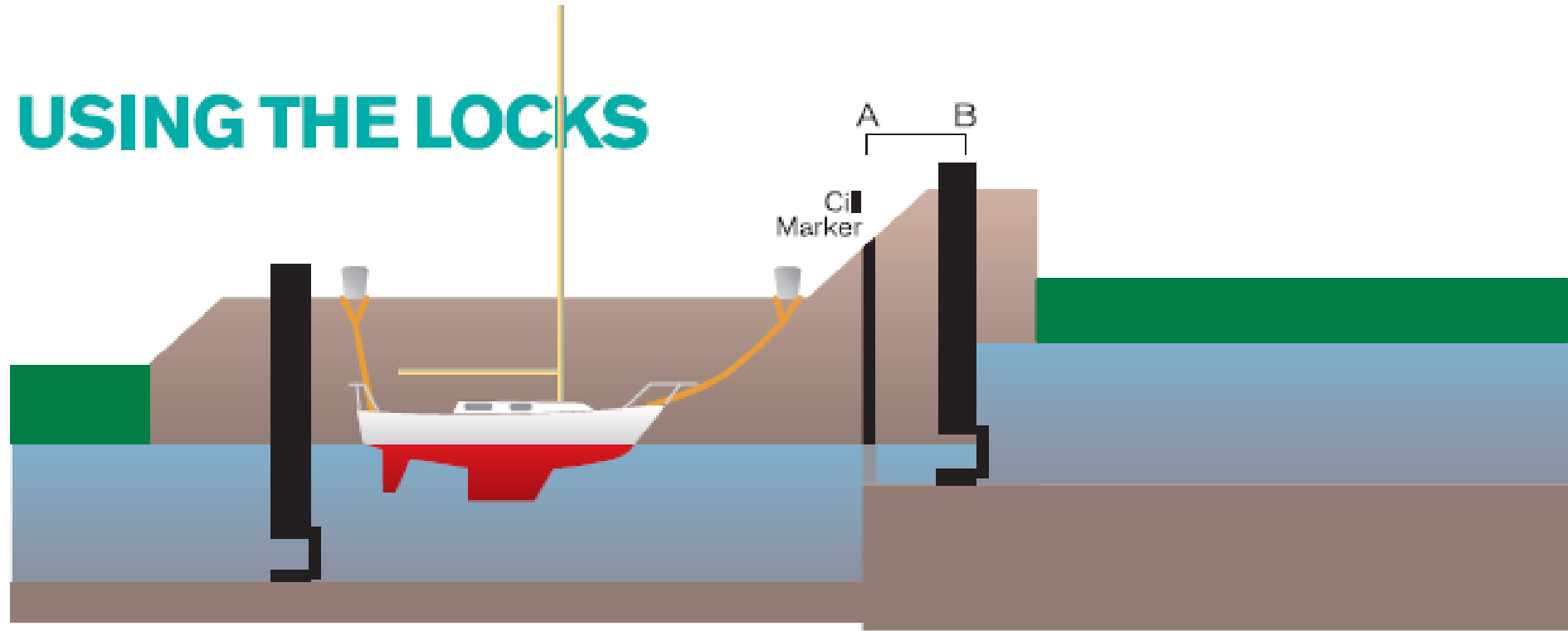
PORT WASTE MANAGEMENT

British Waterways has produced Port Waste Management Plans which are agreed with the Marine Coastguard Agency (MCA) and must be complied with at all times.

Please note that no discharge of oil or bilge water is permitted either in the canal or its adjacent waters and any contravention of this ruling will result in notification to the MCA. As it is an offence to pump the bilges of your craft into the canal or the lochs, doing so may render you liable to prosecution by the Scottish Environmental Protection Agency (SEPA).

Emergency discharge facilities can be arranged using specialist contractors at additional cost - please contact the canal office for advice. There are disposal facilities for small amounts of waste oil at Seaport Marina and Corpach.

USING THE LOCKS



GENERAL

- Although the Caledonian Canal locks are large there is no need to be nervous about using them, as they are mechanised, and are operated by experienced canal staff who know the local conditions.
- Follow the Lock Keeper's instructions, and do not hesitate to ask him or her for help.
- Be prepared to share the lock chamber with other craft - this reduces the work load and saves water.
- When approaching each lock, berth at the nearest transit jetty and put a crew member ashore to take your lines in the lock.
- Ropes should be tended from on board, not from the shore, and should be led to a cleat or winch to aid control. However, at main lock flights ropes of small craft should be tended from shore, by an adult, to permit vessels to be "walked" from lock to lock on the flight. This avoids the need to start & stop engines and throw lines ashore at each lock.

- To avoid a build up of fumes in the lock chamber please switch off engines once your ropes are secured ashore.

BASIC EQUIPMENT YOU WILL NEED

- 1 Three or four good quality ropes of sufficient length (15 metres) to reach the bottom of the lock chamber
- 2 Adequate fenders to protect your topsides – 3 or 4 per side should suffice.
- 3 In addition, a good tip is to lace a canvas sheet between the hull and fenders to avoid scuff marks.
- 4 If you have a fender plank, use it.
- 5 Life jackets should be available for, and preferably worn by all crew. Children and non-swimmers should wear them at all times.
- 6 Ensure that there is sufficient fuel on board, and that engine controls are working correctly. Refuelling is not permitted in lock chambers.

LOCKING TIPS

Those on board will need to control the craft during the locking process. This is not difficult if a few rules are observed:

- 1 Approach the lock slowly and steadily, if the lock is not ready berth at a transit jetty while the gates are opened. Please do not 'hover' outside the lock. Call the Lock Keeper on Ch 74 and follow their instructions.
- 2 On single locks have a crew member positioned at bow and stern to manage ropes. On lock flights crew from small vessels should manage ropes on shore as directed by Lock Keepers.
- 3 Ensure ropes are clear from obstruction and can run cleanly through fairleads or stemhead roller.

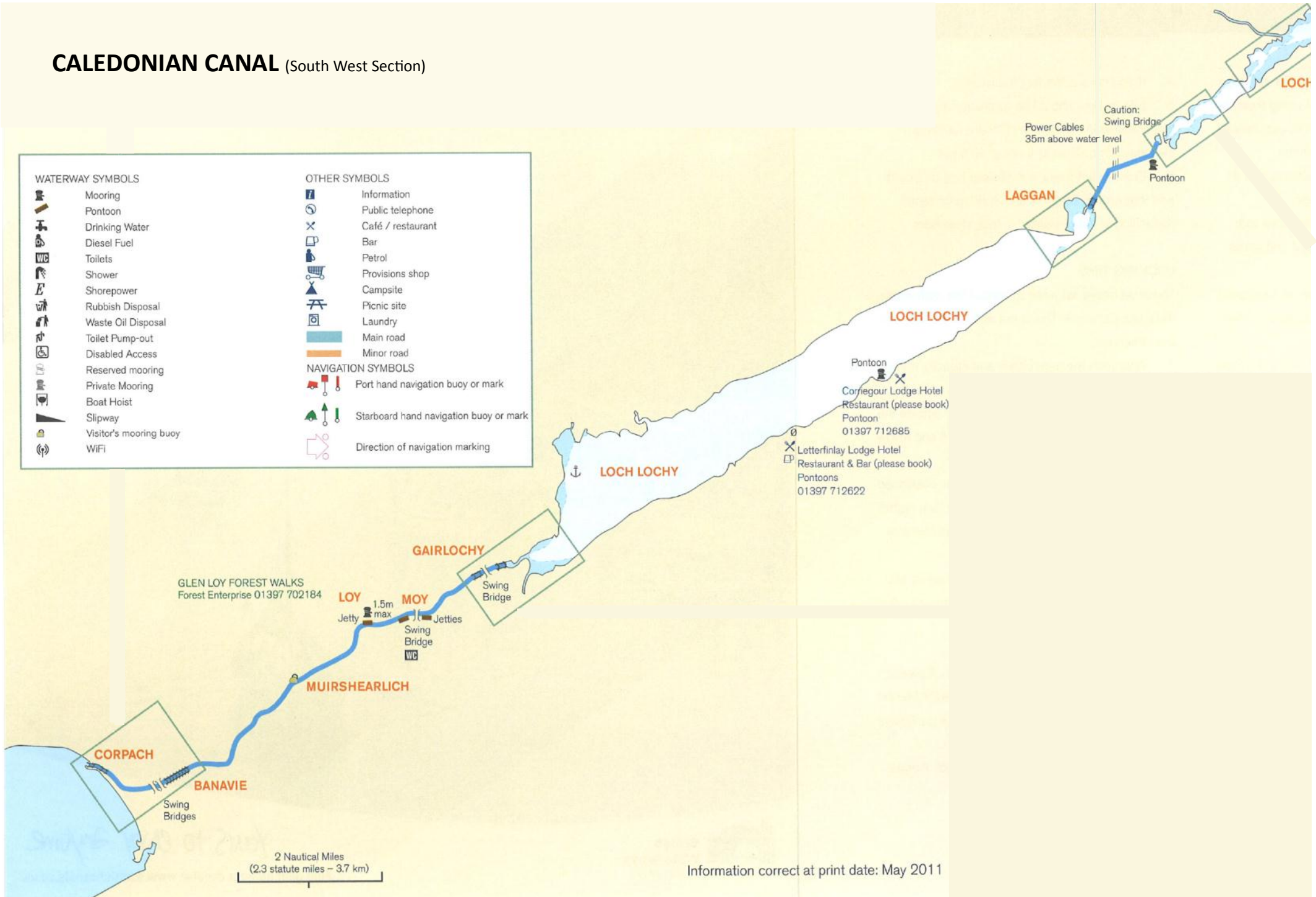
CILL MARKERS

To avoid possible contact with the lock cill please ensure that your vessel keeps clear of the Cill Marker on the lock wall, and remains clear of lock gangways (area A-B on diagram).

If you are in any doubt please ask a Lock Keeper for advice.

CALEDONIAN CANAL (South West Section)

WATERWAY SYMBOLS		OTHER SYMBOLS	
	Mooring		Information
	Pontoon		Public telephone
	Drinking Water		Café / restaurant
	Diesel Fuel		Bar
	Toilets		Petrol
	Shower		Provisions shop
	Shorepower		Campsite
	Rubbish Disposal		Picnic site
	Waste Oil Disposal		Laundry
	Toilet Pump-out		Main road
	Disabled Access		Minor road
	Reserved mooring	NAVIGATION SYMBOLS	
	Private Mooring		Port hand navigation buoy or mark
	Boat Hoist		Starboard hand navigation buoy or mark
	Slipway		Direction of navigation marking
	Visitor's mooring buoy		
	WiFi		



Information correct at print date: May 2011

CALEDONIAN CANAL (Central Section)

Fiddler's Restaurant, Bar & Coffee Shop - 01456 450678
 Drumnadrochit Hotel - Restaurant & Café - 01456 450218
 Monster Exhibition - 01456 450573
 Bike Hire - 01456 450223
 Pony Trekking - 01456 450220

Urquhart Castle
 Pier (Private)

Inver Forest
 Shop & T
 (1.5 miles)

FOYERS
 Pier exposed to NE

✕ Foyers Bay Country House
 ☐ Restaurant (reservation essential) 01456 486
 Craigdarroch House Hotel
 Restaurant & Bar (please book) 01456 48640

INVERMORISTON

LOCH NESS

FORT AUGUSTUS

FOREST WALKS
 Forest Enterprise
 01320 366322

KYTRA

Pontoons
 Information Board

Power Cables
 35m above water level

Safe course indicated by
 Green Channel Markers

CULLOCHY

Pontoons
 Information Board

Caution:
 Swing Bridge

LOCH OICH

LOCH OICH - NORTH EASTERN PORTION

This detailed map shows the northern eastern portion of Loch Oich. Key features include the A82 road curving along the top, the Weir, the historic Bridge of Oich, the Aberchalder Swing Bridge, the Cullochy Lock (0.5M), and a Pontoon. A red dashed line indicates a safe course, with a 5m depth marker. Other landmarks include Creag and Aberchalder Point. A scale bar shows 0.25 Nautical Miles, and a compass rose is located in the bottom right corner.

CALEDONIAN CANAL (North East Section)

DOCHGARROCH

DOCHGARROCH
Oakwood Restaurant & Gift Shop
01463 861481

AB2 BUS STOP

Pontoons

Dochgarroch Lock

KEEP CLEAR OF WEIRS

River Ness

DOCHGARROCH Boat Park

0.5 Nautical Mile - 1013 yards - 926 metres

CLACHNAHARRY

Rail Swing Bridge

SEAPORT MARINA, MUIRTOWN

Swing Bridge

INVERNESS

BUGHT PARK CAMPSITE: 01463 236920

TOMNAHURICH

Swing Bridge

Keep close to boat in front to minimise road traffic delays. Opening restricted during peak hours

Power Cables 35m above water level

DOCHGARROCH

LOCH DOCHFOUR

WEATHER FORECASTS
Moray Firth Radio
97.4FM - on the hour

ABRIACHAN
Gardens open to public
01456 861232
Forest Walks
Abriachan Forest Trust
01463 861259

CLANSMAN HOTEL
Restaurant, Bar &
Coffee House
01456 450326

DRUMNADROCHIT HARBOUR
(Privately owned)
Marked Approach Channel
Max depth 6ft
No Rubbish Disposal
Overnight charge
Water

DRUMNADROCHIT 1.5M from harbour
Taxi: 01456 450617 or 01456 450550
Visitor Information Centre 0845 22 55 121
Fiddler's Restaurant, Bar & Coffee Shop - 01456 450678
Drumnadrochit Hotel - Restaurant & Café - 01456 450218
Monster Exhibition - 01456 450573
Bike Hire - 01456 450223
Pony Trekking - 01456 450220

Urquhart Castle

Pier (Private)

Temple Pier (Private - Keep Clear)

Inverfarigaig Forest Walks
Forest Enterprise 01320 366322

Shop & Tearoom
(1.5 miles from Foyers pier)

FOYERS

LOCH NESS

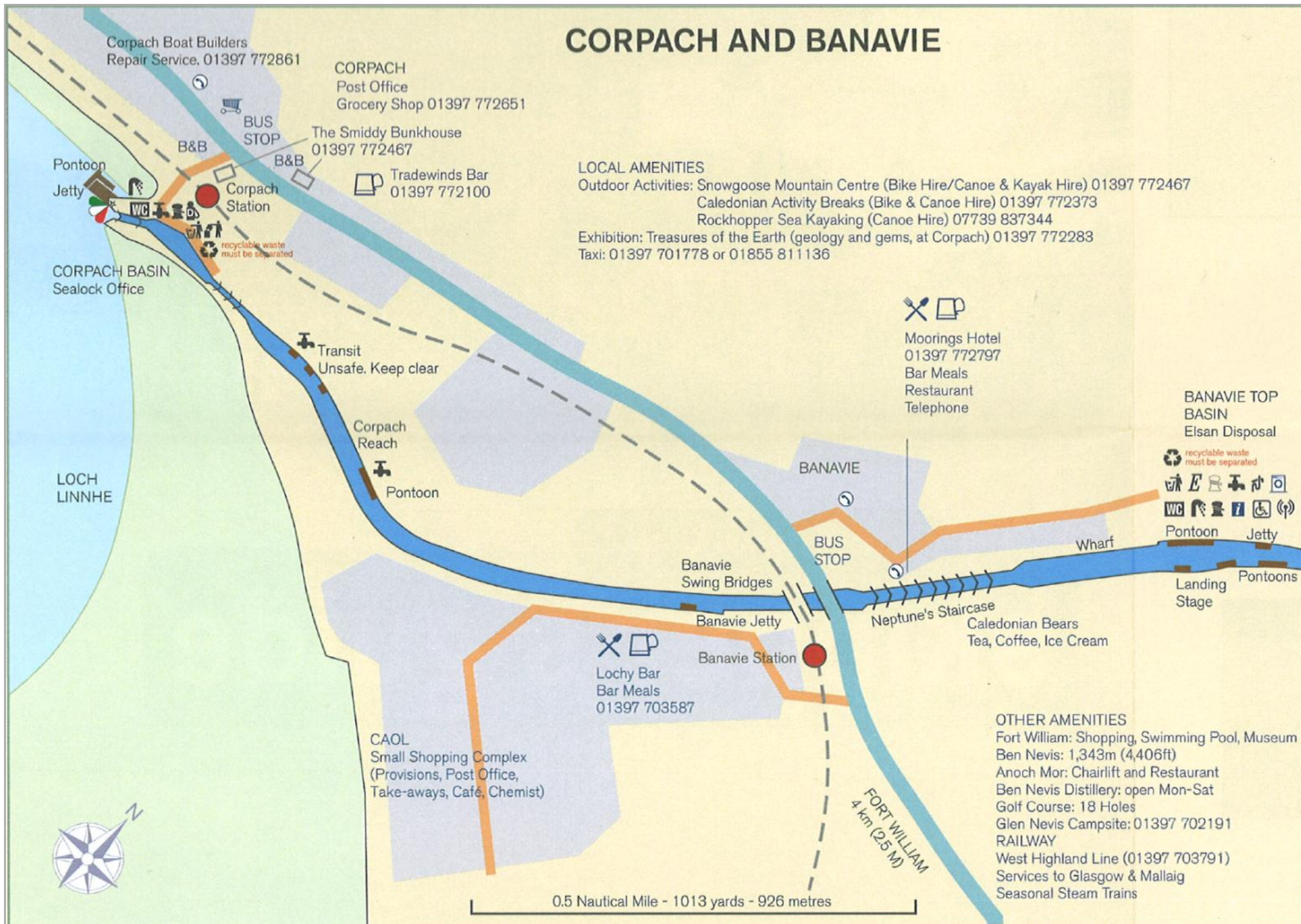
DORES

Slipway

DORES INN - Bar Meals

01463 751203

CORPACH AND BANAVIE



LOCAL AMENITIES

Outdoor Activities: Snowgoose Mountain Centre (Bike Hire/Canoe & Kayak Hire) 01397 772467
 Caledonian Activity Breaks (Bike & Canoe Hire) 01397 772373
 Rockhopper Sea Kayaking (Canoe Hire) 07739 837344
 Exhibition: Treasures of the Earth (geology and gems, at Corpach) 01397 772283
 Taxi: 01397 701778 or 01855 811136



Moorings Hotel
 01397 772797
 Bar Meals
 Restaurant
 Telephone



BANAVIE TOP
 BASIN
 Elsan Disposal

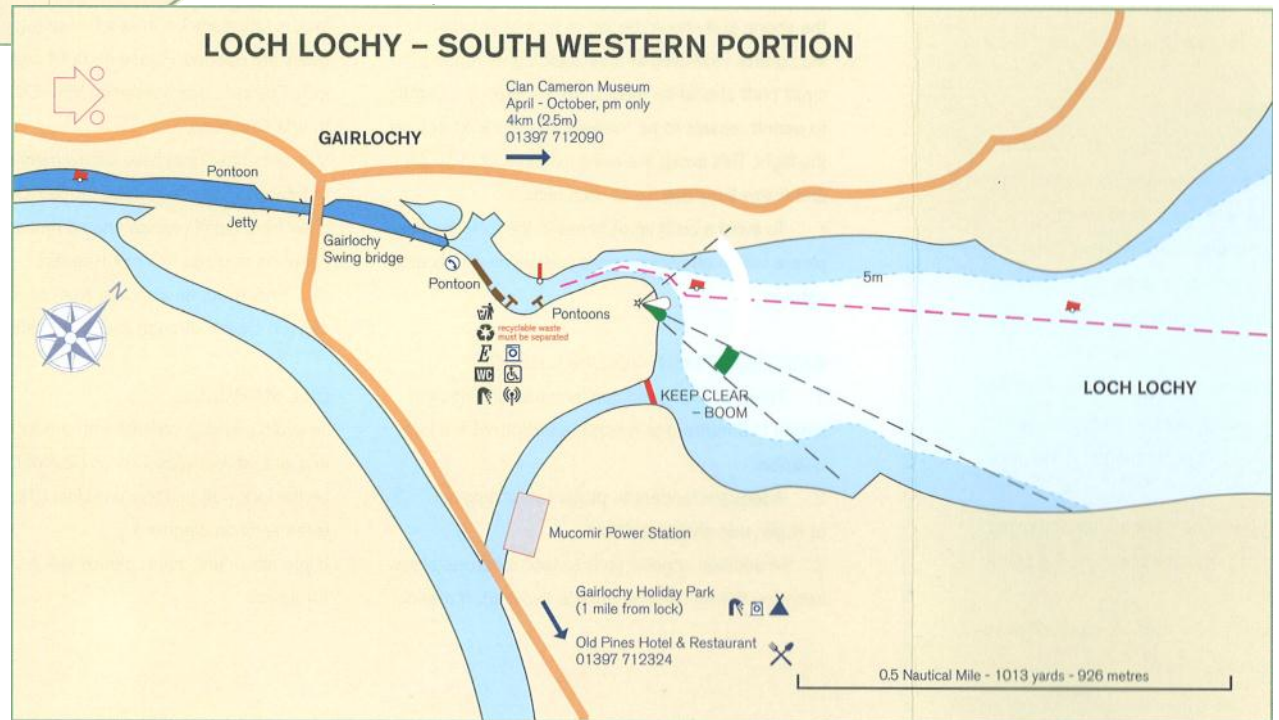
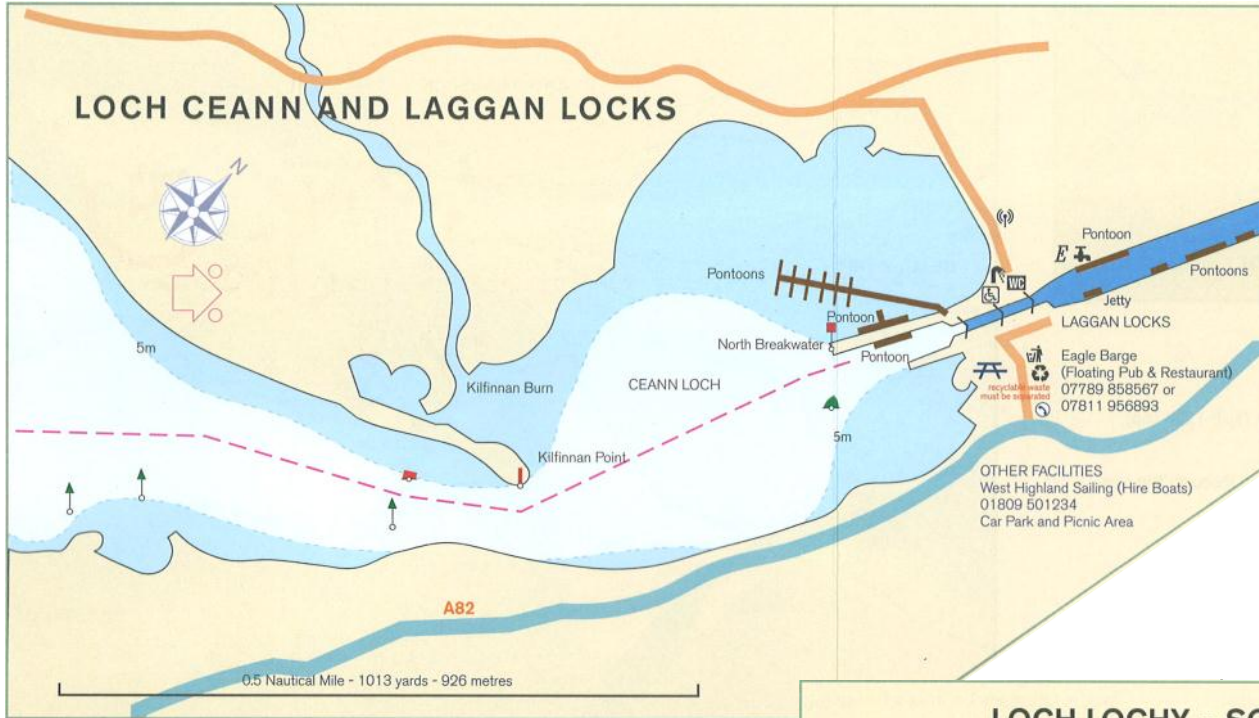
OTHER AMENITIES

Fort William: Shopping, Swimming Pool, Museum
 Ben Nevis: 1,343m (4,406ft)
 Anoch Mor: Chairlift and Restaurant
 Ben Nevis Distillery: open Mon-Sat
 Golf Course: 18 Holes
 Glen Nevis Campsite: 01397 702191
RAILWAY
 West Highland Line (01397 703791)
 Services to Glasgow & Mallaig
 Seasonal Steam Trains

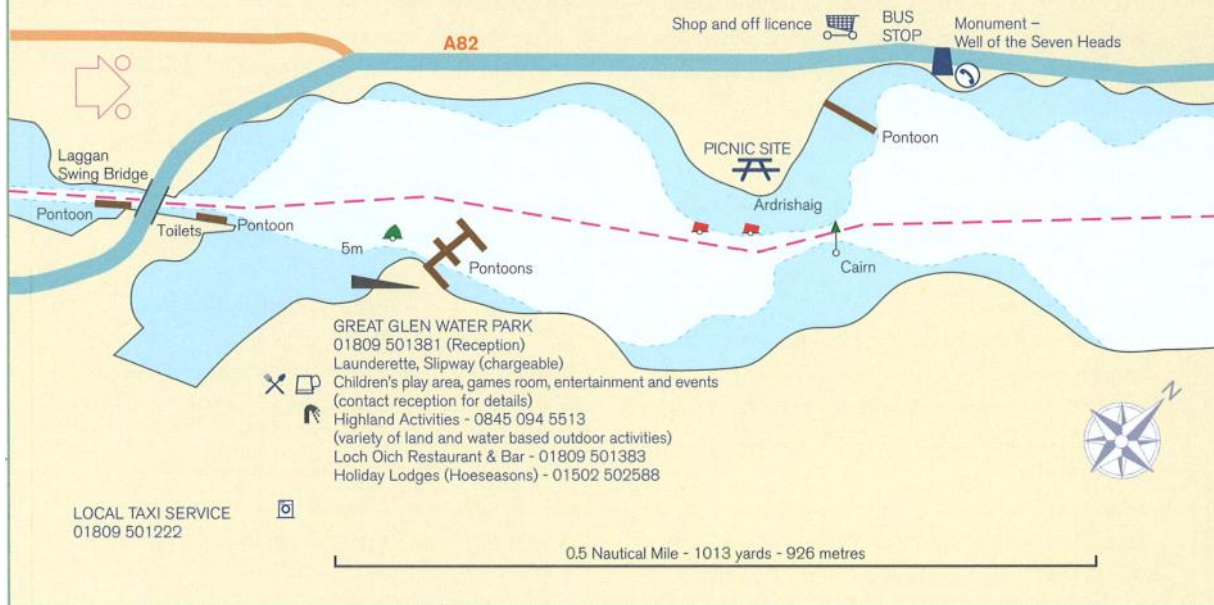


0.5 Nautical Mile - 1013 yards - 926 metres

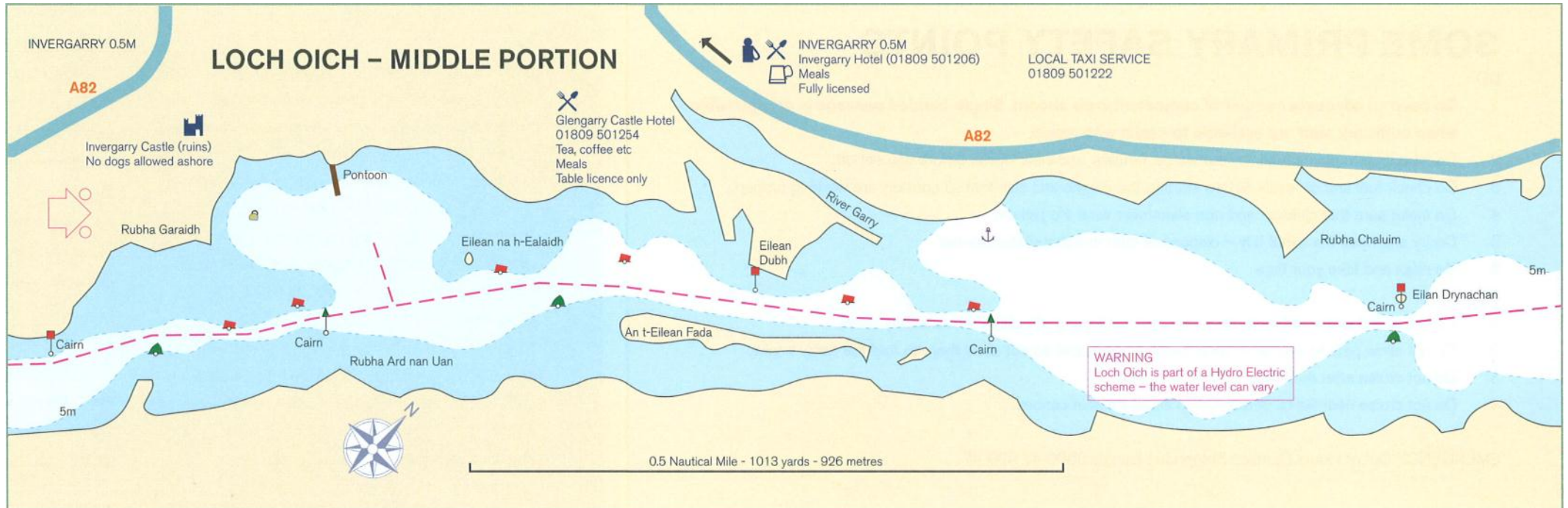
FORT WILLIAM
 4 km (2.5 M)



LOCH OICH – SOUTH WESTERN PORTION

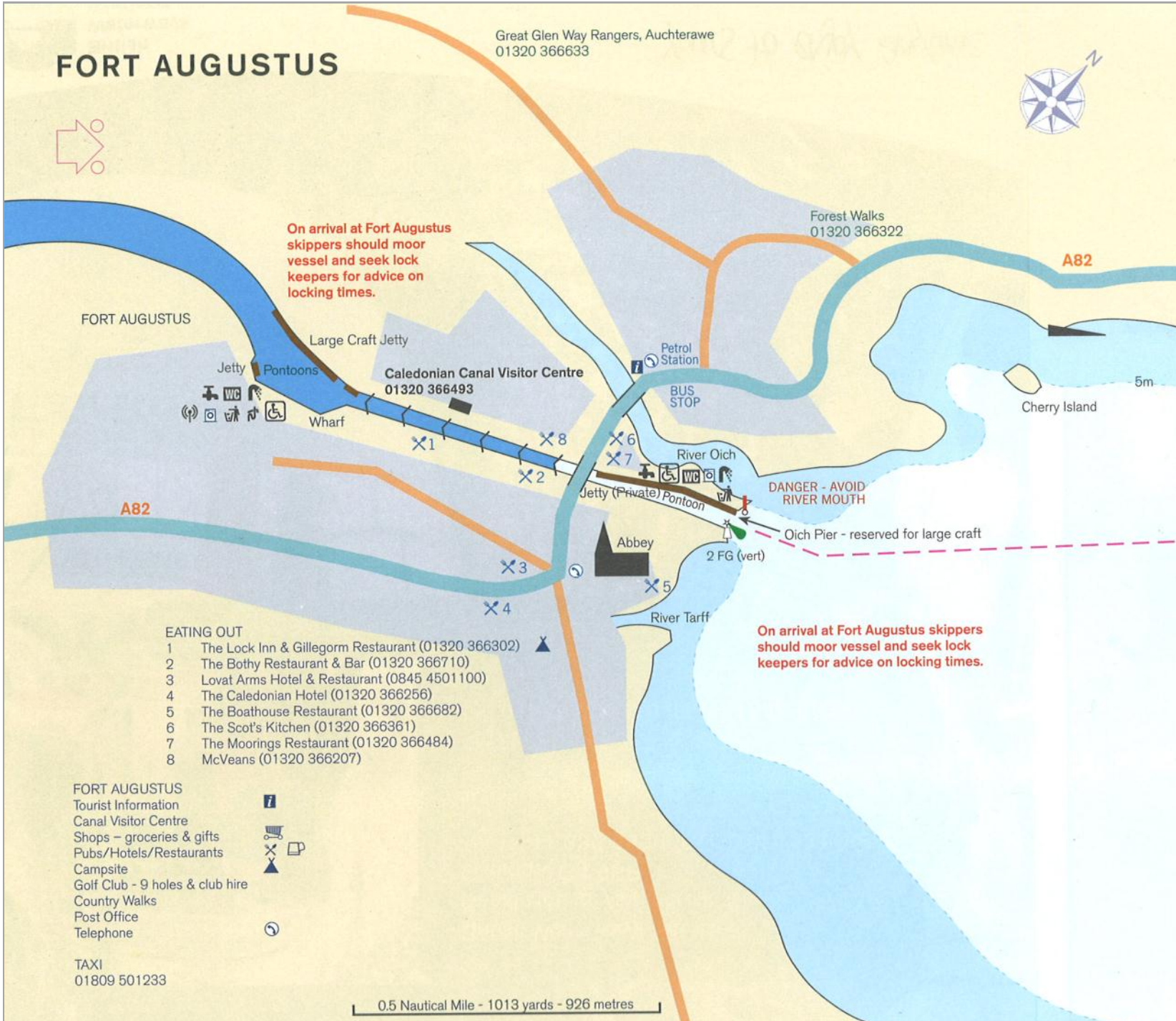


LOCH OICH – MIDDLE PORTION



FORT AUGUSTUS

Great Glen Way Rangers, Auchterawe
01320 366633



**On arrival at Fort Augustus
skippers should moor
vessel and seek lock
keepers for advice on
locking times.**

**On arrival at Fort Augustus skippers
should moor vessel and seek lock
keepers for advice on locking times.**

- EATING OUT**
- 1 The Lock Inn & Gillegorm Restaurant (01320 366302)
 - 2 The Bothy Restaurant & Bar (01320 366710)
 - 3 Lovat Arms Hotel & Restaurant (0845 4501100)
 - 4 The Caledonian Hotel (01320 366256)
 - 5 The Boathouse Restaurant (01320 366682)
 - 6 The Scot's Kitchen (01320 366361)
 - 7 The Moorings Restaurant (01320 366484)
 - 8 McVeans (01320 366207)

- FORT AUGUSTUS**
- Tourist Information
 - Canal Visitor Centre
 - Shops – groceries & gifts
 - Pubs/Hotels/Restaurants
 - Campsite
 - Golf Club - 9 holes & club hire
 - Country Walks
 - Post Office
 - Telephone

TAXI
01809 501233

0.5 Nautical Mile - 1013 yards - 926 metres

